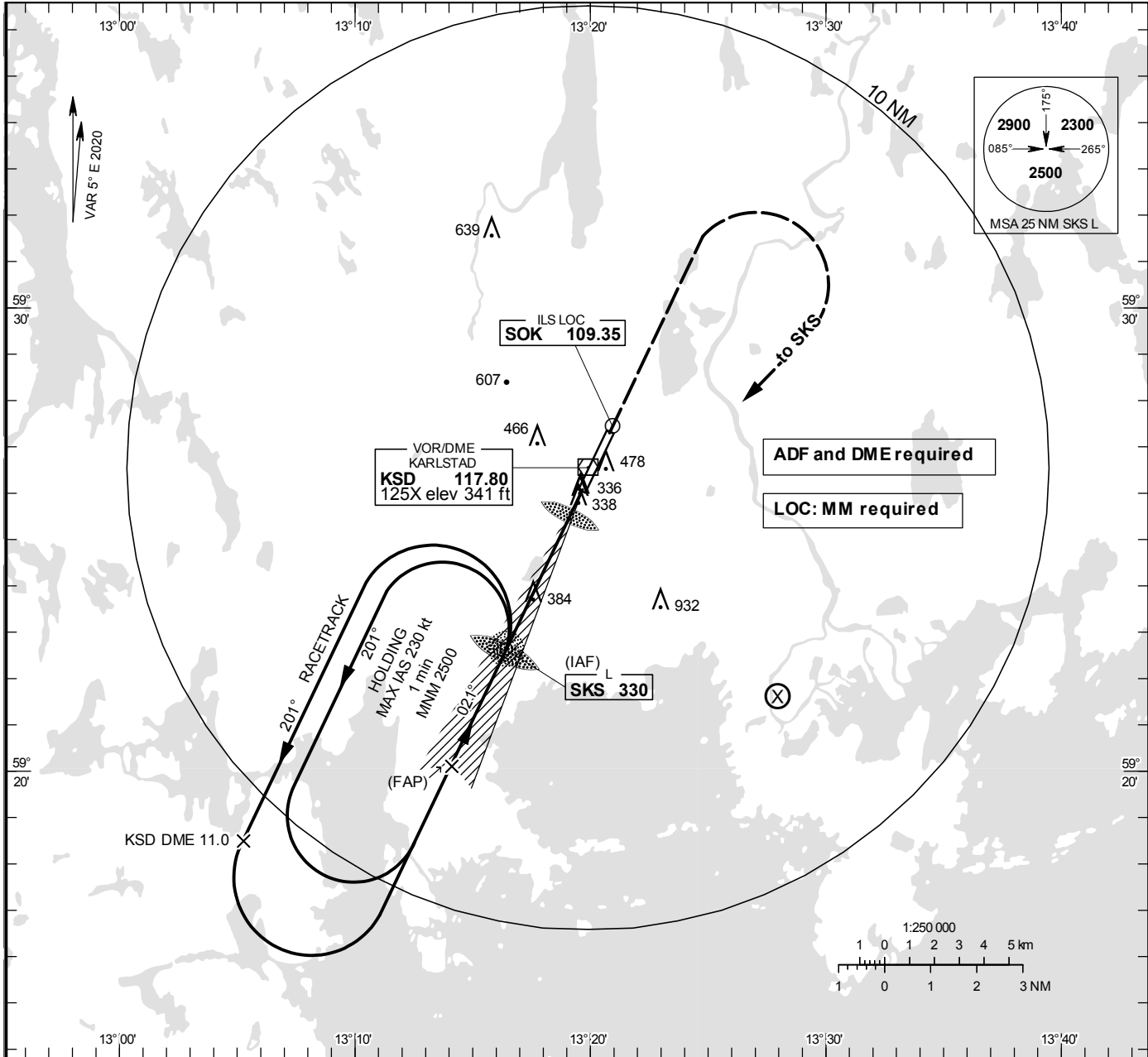


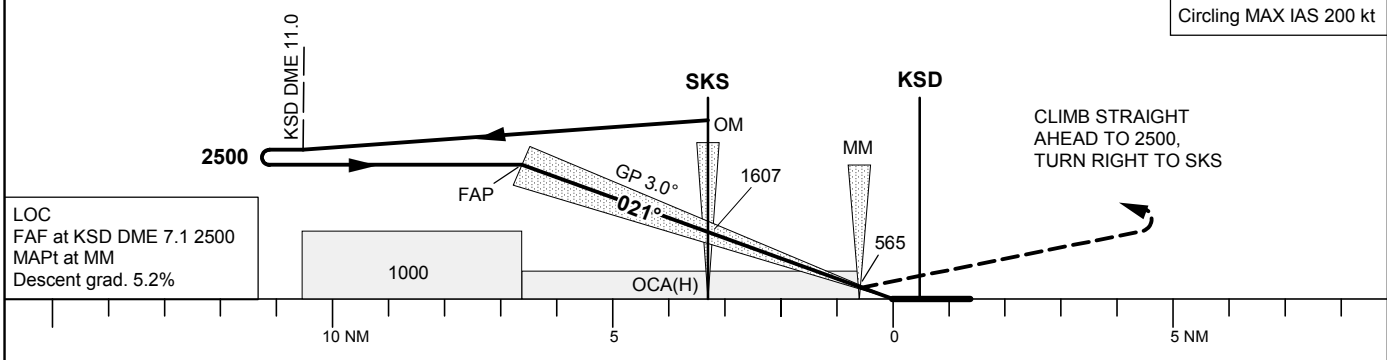
INSTRUMENT
APPROACH
CHART – ICAO

THR ELEV 333.0 ft, AD ELEV 353 ft
OCH are related to THR.
Circling OCH are related to AD ELEV.
BRG are MAG
ALT. HGT and ELEV in ft.

KARLSTAD TOWER 119.455



TA 5000 ft AMSL RDH 51.5 ft Max speed within racetrack 240 kt IAS *Timing not authorized for defining the MAPt



OCA (H)					Final approach		LOC Distance FAF-MAPt 6.1 NM*					
Cat of ACFT	A	B	C	D	DME KSD NM		7	6	5	4	3	2
Straight-in	475(142)	484(151)	493(160)	502(169)	ALT		2460	2140	1820	1510	1190	870
Approach	630(300)				GS	kt		80	100	120	140	160
Circling	780(430)	910(560)	1330(980)	1330(980)	Time	min:s	4:32	3:38	3:02	2:36	2:16	2:01
Circling NW RWY	770(420)	910(560)	1010(660)	1040(690)	Rate of descent	ft/min		425	530	635	745	850